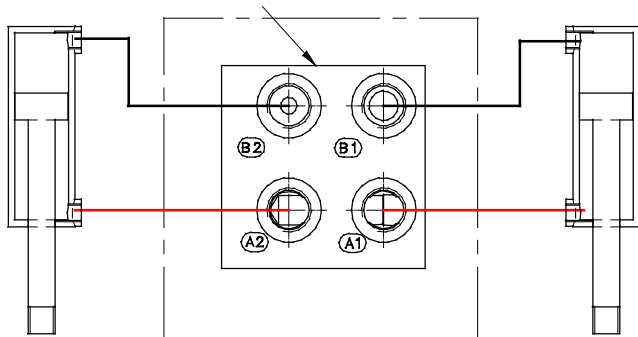
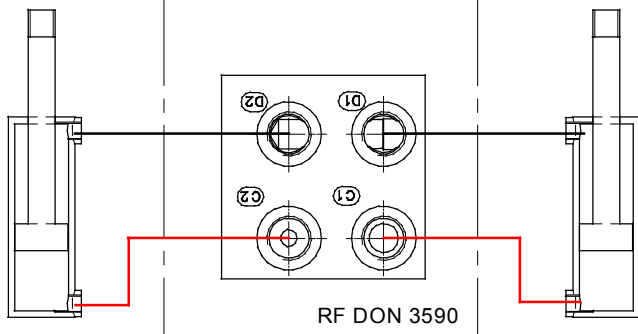
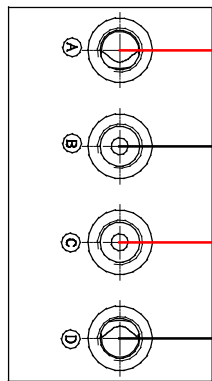


THE FLOW DIVIDER HAS TO BE SITUATED IN THE CENTRE OF THE VEHICLE WITH HOSE'S AT SAME LENGTHS EACH SIDE TO SUPPLY CYLINDERS.

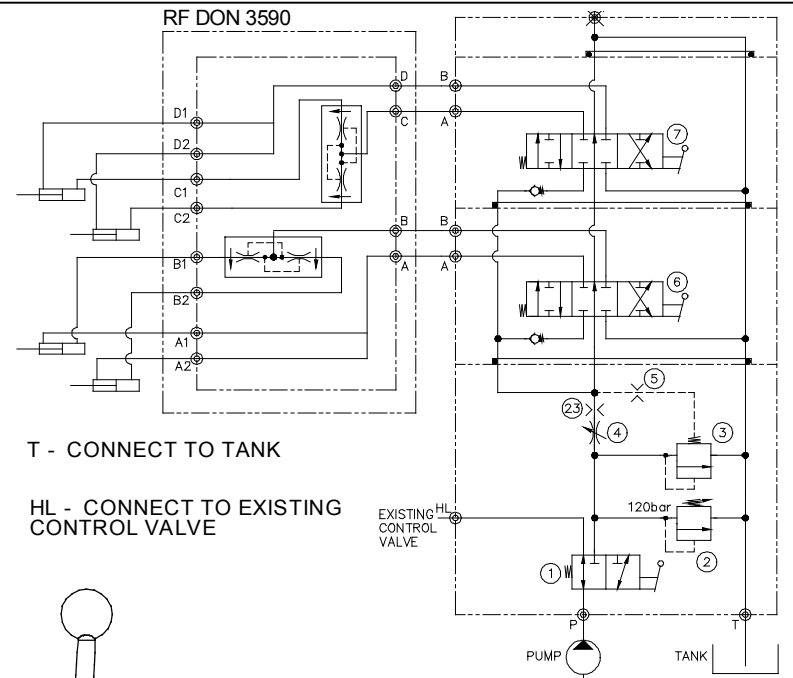


PRIORITY FLOW CONTROL TO SERVICES INITIAL SETUP:
SUPPLIED FULLY CLOSED (i.e. NO Flow)
TURN ANTI CLOCKWISE GRADUALLY
TO INCREASE FLOW TO A MAXIMUM OF 10lpm.



TANK PORT TO BE PLUGGED

TARP CONTROL COVER ON OFF
ROLLER FRONT / UP BACK / DOWN
donovan
www.donovantarps.co.uk



T - CONNECT TO TANK

HL - CONNECT TO EXISTING CONTROL VALVE

EXISTING HL CONTROL VALVE

120bar

PUMP

TANK

DETAILS

RF DON 3590

1. ALL PORTS 3/8" BSP

RF DON 3592

- 1. P & T 3/4" BSP PORT
- 2. HL 3/4" BSP MALE PORT
- 3. ALL OTHER PORTS 3/8" BSP
- 4. INLET NOMINAL FLOW 80LPM

BALL VALVE

RELIEF SET @ 120bar & TAMPERPROOF

P - CONNECT TO PUMP

APPROVED	DATE	DRAWN	CHECKED	APPROVED	DATE	AMENDMENT	SCALE 1 : 1
CA					28/5/10	2717, 2755	DIMENSIONS mm
TITLE GLADIATOR & XCALIBUR AUTOMATIC SHEETING SYSTEM							THIRD ANGLE PROJECTION
CUSTOMER PART No.							
PART No. RF DON 3592							SHEET 1 OF 1
							ISSUE 4